



# Cdc5L Polyclonal Antibody

<b>Catalog No</b>	YP-Ab-16689
<b>Isotype</b>	IgG
<b>Reactivity</b>	Human;Mouse;Rat
<b>Applications</b>	IHC;IF;ELISA
<b>Gene Name</b>	CDC5L
<b>Protein Name</b>	Cell division cycle 5-like protein
<b>Immunogen</b>	The antiserum was produced against synthesized peptide derived from human CDC5L. AA range:721-770
<b>Specificity</b>	Cdc5L Polyclonal Antibody detects endogenous levels of Cdc5L protein.
<b>Formulation</b>	Liquid in PBS containing 50% glycerol, 0.5% BSA and 0.02% sodium azide.
<b>Source</b>	Polyclonal, Rabbit,IgG
<b>Purification</b>	The antibody was affinity-purified from rabbit antiserum by affinity-chromatography using epitope-specific immunogen.
<b>Dilution</b>	IHC: 1/100 - 1/300. ELISA: 1/5000.. IF 1:50-200
<b>Concentration</b>	1 mg/ml
<b>Purity</b>	≥90%
<b>Storage Stability</b>	-20°C/1 year
<b>Synonyms</b>	CDC5L; KIAA0432; PCDC5RP; Cell division cycle 5-like protein; Cdc5-like protein; Pombe cdc5-related protein
<b>Observed Band</b>	
<b>Cell Pathway</b>	Nucleus . Nucleus speckle . Cytoplasm . May shuttle between cytoplasm and nucleus. .
<b>Tissue Specificity</b>	Ubiquitously expressed in both fetal and adult tissues.
<b>Function</b>	disease:A chromosomal aberration involving CDC5L is found in multicystic renal dysplasia. Translocation t(6;19)(p21;q13.1) with USF2.,function:DNA-binding protein involved in cell cycle control. May act as a transcription activator. Also seems to be involved in the second catalytic step of pre-mRNA splicing.,PTM:Phosphorylated; which enhances interaction with PPP1R8.,similarity:Belongs to the CEF1 family.,similarity:Contains 2 HTH myb-type DNA-binding domains.,subcellular location:May shuttle between cytoplasm and nucleus.,subunit:Homodimer. Interacts with DAPK3 (By similarity). Binds to DNA. Binds to adeno-pre-mRNA in an ATP-stimulated manner. Belongs to the spliceosome complex. Part of a spliceosomal 'core' complex consisting of CDC5L, PLRG1, SPF27, CCAP1, CCAP3 and CCAP6. Interacts with PLRG1, Lodestar/TTF2, and NIPP1/PPP1R8. Identified in the spliceosome C complex, at least composed



### Background

The protein encoded by this gene shares a significant similarity with *Schizosaccharomyces pombe* *cdc5* gene product, which is a cell cycle regulator important for G2/M transition. This protein has been demonstrated to act as a positive regulator of cell cycle G2/M progression. It was also found to be an essential component of a non-snRNA spliceosome, which contains at least five additional protein factors and is required for the second catalytic step of pre-mRNA splicing. [provided by RefSeq, Jul 2008],

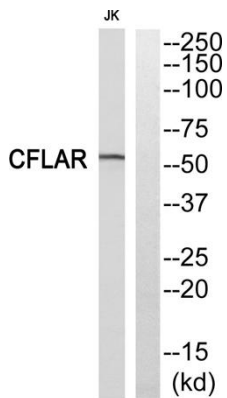
### matters needing attention

Avoid repeated freezing and thawing!

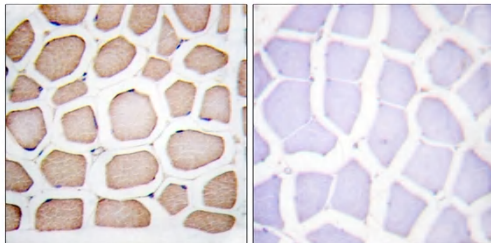
### Usage suggestions

This product can be used in immunological reaction related experiments. For more information, please consult technical personnel.

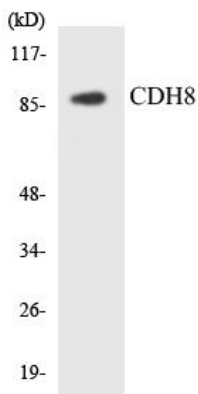
## Products Images



Western blot analysis of CDC5L Antibody. The lane on the right is blocked with the CDC5L peptide.



Immunohistochemistry analysis of paraffin-embedded human smooth muscle, using CDC5L Antibody. The lane on the right is blocked with the CDC5L peptide.



Western blot analysis of the lysates from HeLa cells using CDH8 antibody.